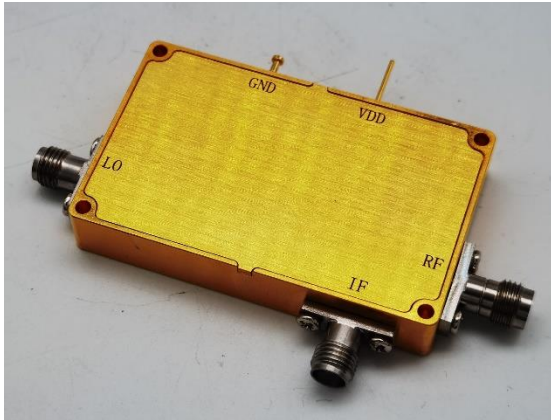


18-44GHz Rx Module, 2.92mm Integrated X4 Multiplier LO Port

2022-4-25



Description:

AT-Rx-1844HG is an Rx Module covering 18-44GHz based on GaAs MMIC technology.

RF Port frequency range is from 18-44GHz with 2.92mm connector. LO range is 4.5-11GHz as X4 multiplier inside on LO chain. IF port frequency from DC to 20GHz with SMA Female connector.

More information, please visit www.atmicrowave.com

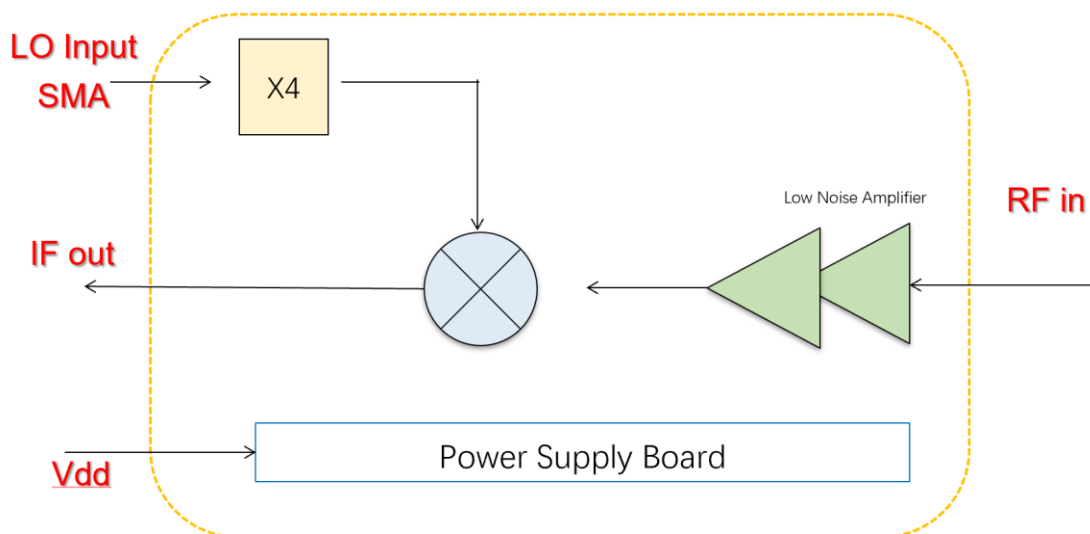
Feature

- ✓ RF Range: 18-44GHz
- ✓ LO Range: 4.5-11GHz
- ✓ High Gain: 25dB
- ✓ Low NF=3dB

Application

- ✓ 5G Communication
- ✓ Test Equipment
- ✓ ROF (RF Over Fiber)
- ✓ Radar System

Diagram Block





AT-RX-1844HG

18-44GHz Rx Module Integrated with x4

Electronical Specifications: (IF=100MHz if not specified)

Parameter	Min	Typical	Max
RF Frequency		18-44GHz	
IF Range		DC-20GHz	
Conversion Gain	20dB	25dB	
LO Input Frequency		4.5-11GHz	
LO Driver	+3dBm	+5dBm	+7
LO Multiplier Factor		X4	
NF		3dB	4.5dB
Vdd		+5V	+8V
Idd		0.3A	
Spec Temp		25C	

Mechanical Information

Item	Description
RF Port	2.92mm
LO Port	SMA Female
IF Port	SMA Female
Case Material	Copper
Finish	Gold Plated
Weight	130g
Size:	See outline

Absolute Maximum Ratings Table

Parameter	Value
RF Power	+10dBm
LO Power	+23dBm
Vdd	+9V
Operating Temperature	-20 to +70C
Storage Temperature	-65 to +150C



Test Data (25C)

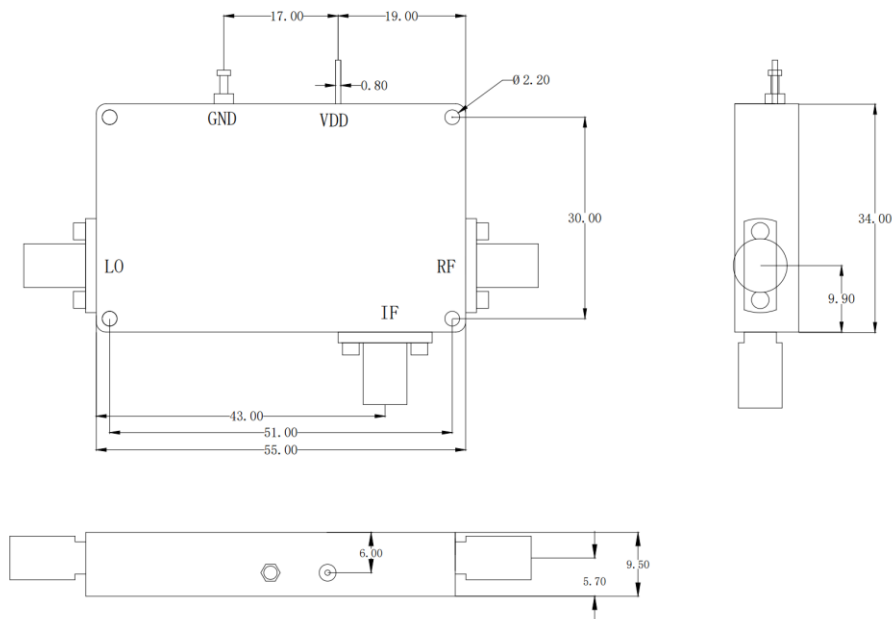
Please note that test curves will vary slightly from unit to unit.

TO BE ADDED

Notes:

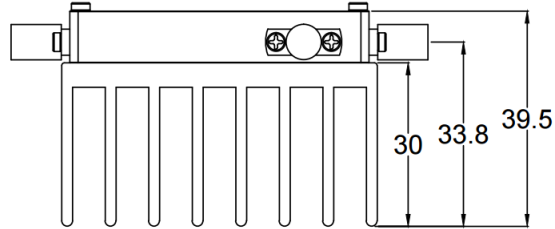
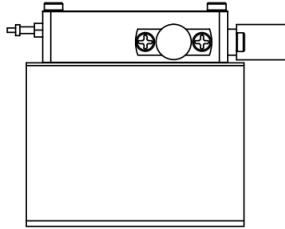
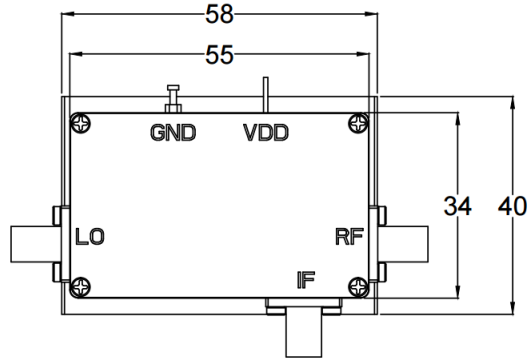
1. Datasheet may be changed according to update of MMIC, Raw materials , process, and so on.
2. This data is only for reference, not for guaranteed specifications.
3. Please contact AT Microwave team to make sure you have the most current data.

Dimension (mm)



Outline without heatsink





Outline with small heatsink in default,
which can be removed according to customer's actual application.

